

# Richmond



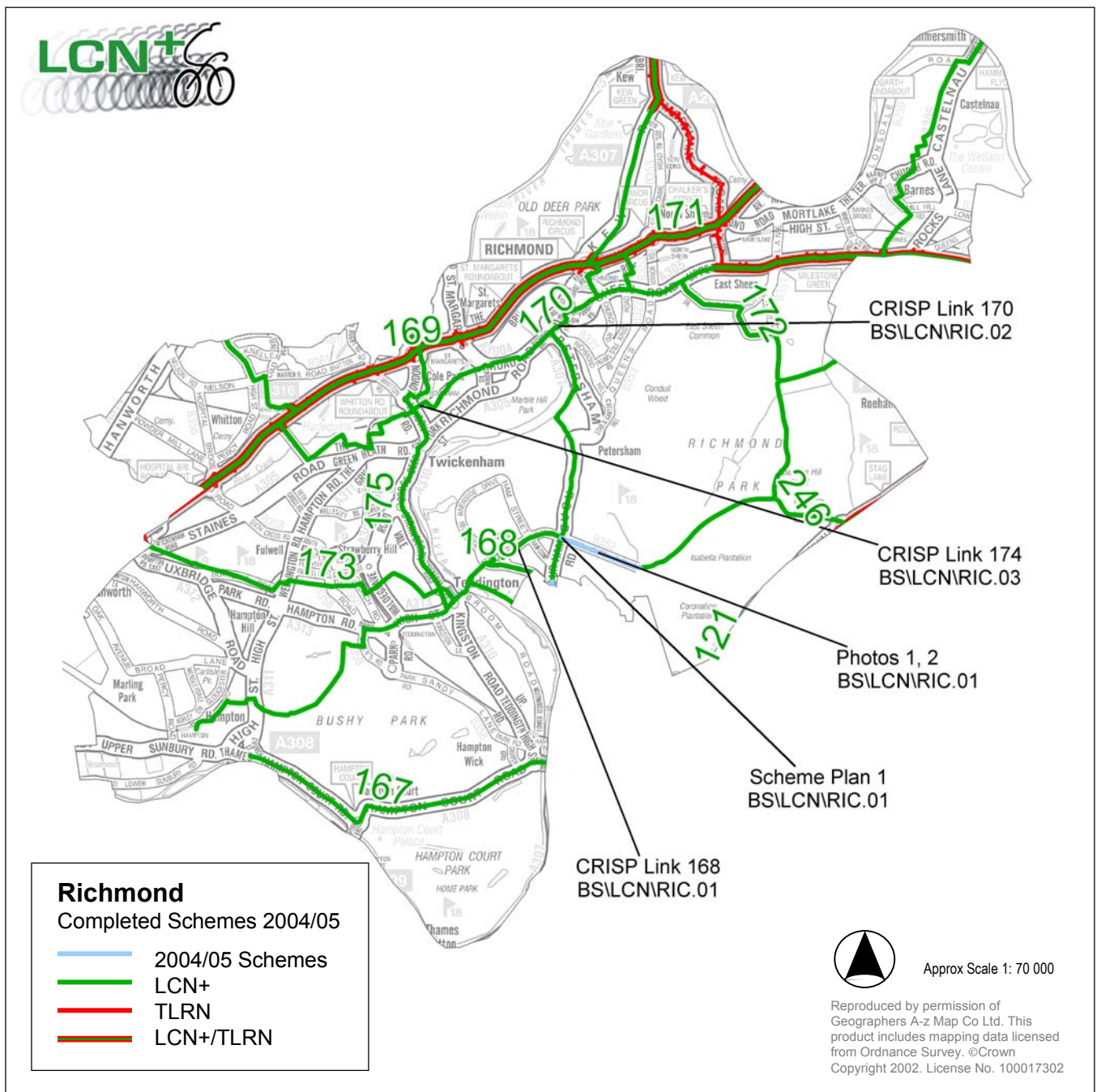
Borough Officer: **Lisa Fenn**

I have worked for Richmond Council for eight years and have a background in traffic management and road safety. I have been the borough cycling officer for three years.

Four percent of all journeys in Richmond are by bicycle.

We also have an ongoing programme of installing cycle parking borough-wide to help to promote cycling as an alternative mode of travel

We are close to finalising one Crisp study for one of the eight links within the borough, with two other studies ongoing. All schemes borough-wide are assessed to ensure that cycle measures are introduced where possible. In my estimation we have achieved 35% of total network completion.





1  
 ◀ ◻ Scheme Photo 1 & 2  
 ▶ ◻ Scheme Plan 1

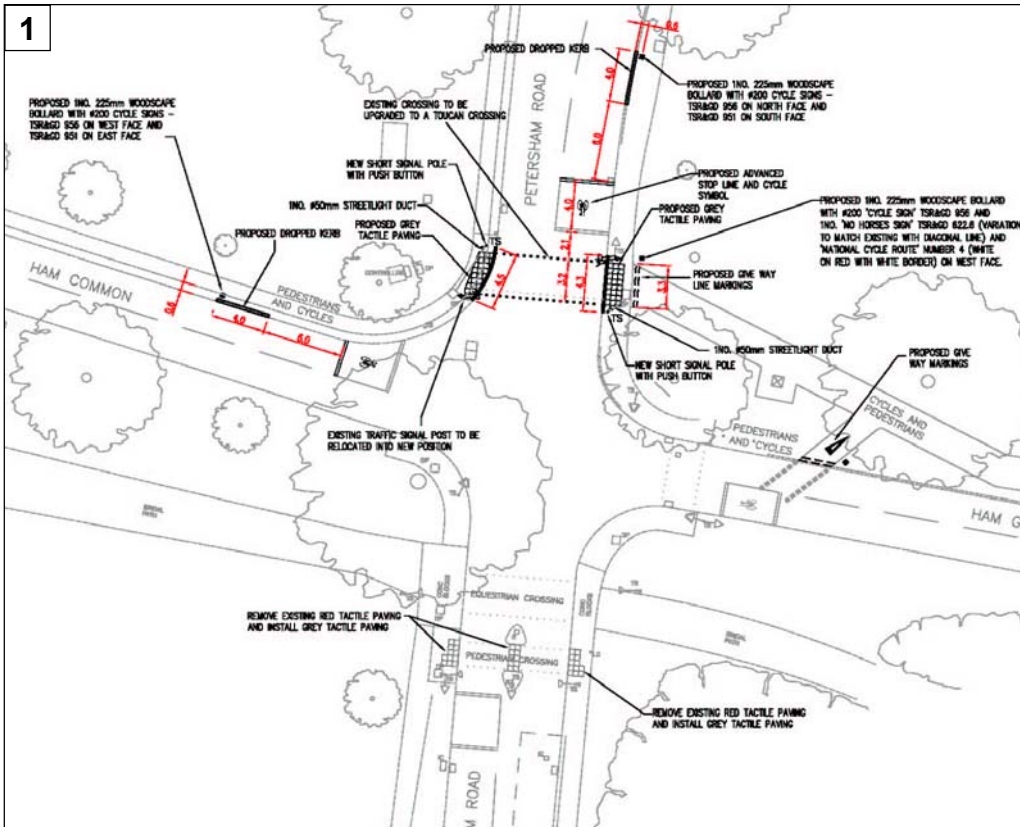
**Scheme Code:** BS\LCN\RIC.01

**Link Number:** 168

**Location:** Ham Gate Avenue & junction with Petersham Rd

**Description:** Completion of shared path, design of toucan crossing and implementation of "Quick Fix" measures (e.g. drop kerbs, signing, markings) identified in CRISP Study.

**Cost:** £64 000 (includes CRISP Study) **Length:** 1.02



**CRISP BS\LCN\RIC.02**

**Link Number:** 170

**CRIM undertaken:**

15.3.2005

**Final CRISP report:**

2005/6

**Cost:** £14 550

**Length:** 7.41km

**CRISP BS\LCN\RIC.03**

**Link Number:** 174

**CRIM undertaken:**

24.3.05

**Final CRISP report:**

2005/06

**Cost:** £14 550

**Length:** 6.44km

**Scheme Code:** BS\LCN\RIC.04

**Link Number:** 170 & 174 (Various locations)

**Description:** Cycle count, traffic speed and volume surveys. **Cost:** £2 700

**CRISP BS\LCN\RIC.01**

**Link Number:** 168

**CRIM undertaken:** 20.5.04 **Final CRISP report:** 2005/06

**Cost:** £9 000 (included in scheme cost) **Length:** 16.63km