

Ealing



Borough Officer: **Robert Davis** and **Colin McKenzie**

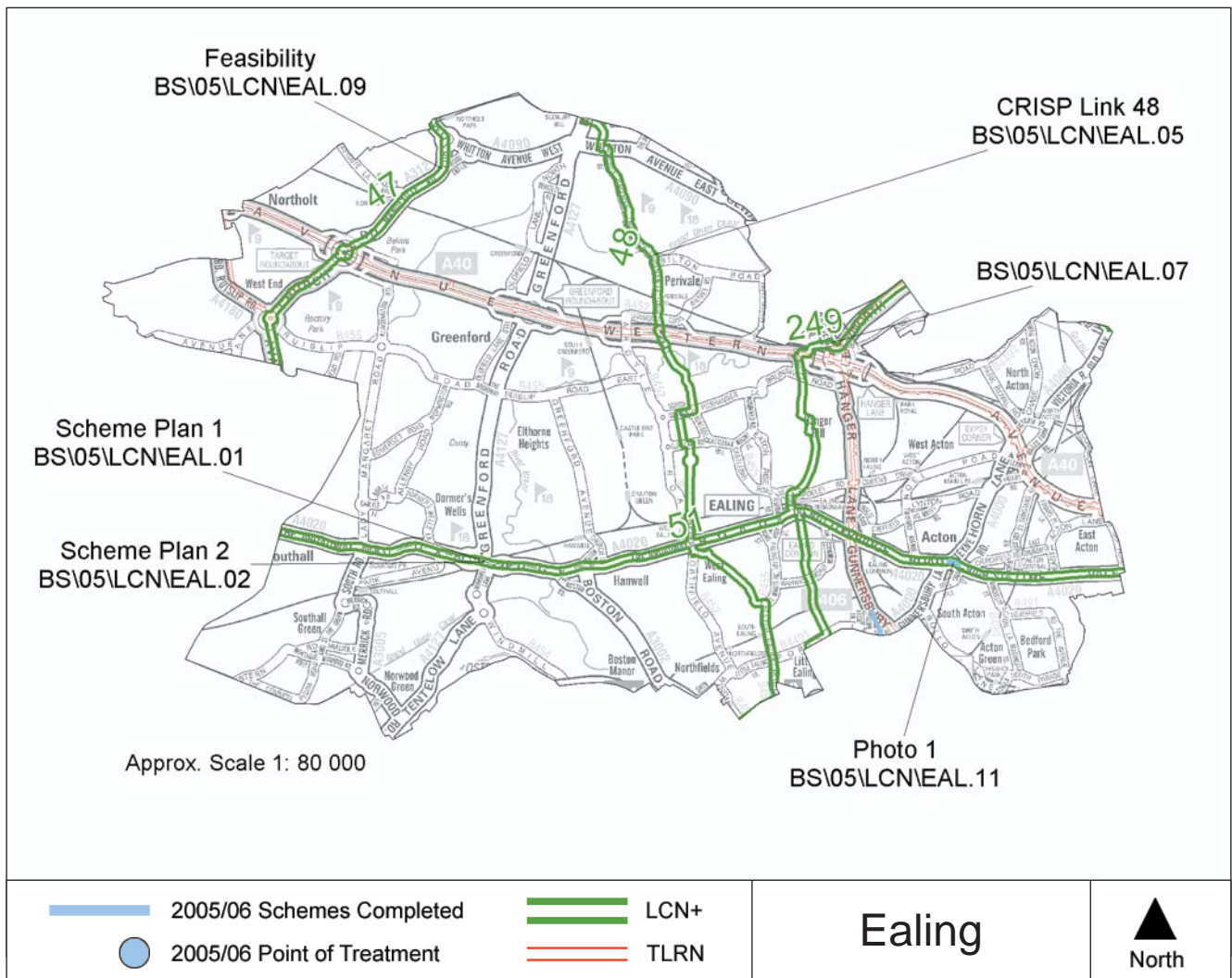


I work in the transport planning department of Ealing council. I work closely with external consultants to produce good designs, which are then implemented by our Highways Management department, term consultants, and term contractors.

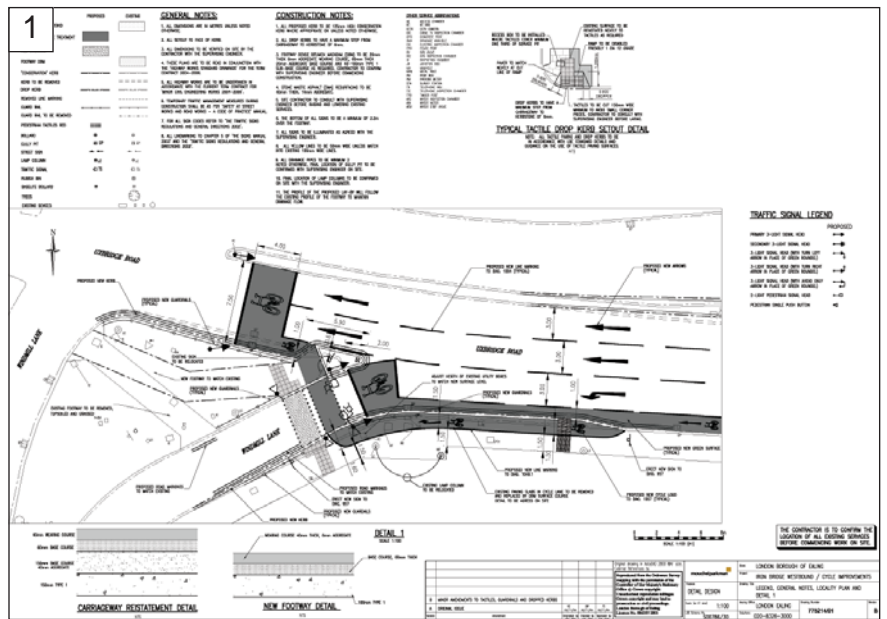
We count parked cycles throughout the borough, and moving cycles on Link 51 (Uxbridge Road). After two disappointing years, counts are now again showing signs of growth. Lack of time has limited the rate of implementation of facilities. Each facility is carefully scrutinised by interested parties, and this process can be lengthy. As elsewhere in London, it is almost impossible

to implement cycle facilities that reduce car parking space or junction capacity for motor vehicles.

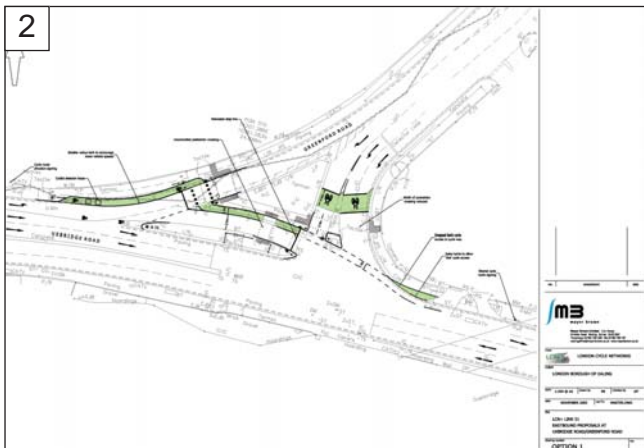
Cyclist casualties in Ealing are too low for definite conclusions to be drawn from one year's data, but the trend appears to be downwards, in line with pedestrian figures. Monitoring continues. Good communication with our term consultants has enabled us to make some improvements for cyclists when roads are resurfaced. Cycle lanes, in particular, have been upgraded to meet the LCDS at zero cost. The CRISP process has encouraged more members of Ealing Cycling Campaign to get involved in infrastructure planning. As a result, relations are good and most schemes meet with their approval.



Scheme Plan: 1
Scheme Reference: BS\05\LCN\EAL.01
Location: Iron Bridge Junction
Link number: 51
Description: Iron Bridge westbound revised design and eastbound traffic modelling and design changes.
Cost: £100,000



Scheme Plan: 2
Scheme Reference: BS\05\LCN\EAL.02
Location: Uxbridge Road, Iron Bridge eastbound
Link number: 51
Description: Design to provide ASLs, one-way exemptions and signing.
Length: 0.34km **Cost:** £40,000



Scheme Photo: 1
Scheme Reference: BS\05\LCN\EAL.11
Location: Uxbridge Road junction with Steyne Road
Link number: 51
Description: Cycle priority through junction including kerb build-out, cycle lanes & ASL's.
Length: 0.13km **Cost:** £25,000

Scheme Reference: BS\05\LCN\EAL.09
Location: Northolt Park Station, A4090 Petts Hill link towards Mandeville Road
Link number: 47
Description: Feasibility and design to improve cycle access through railway arch and to provide cycle tracks as continuation of multi-modal scheme at borough boundary with Harrow.
Length: 0.48km
Cost: £15,000

Scheme Reference: BS\05\LCN\EAL.07
Location: Hanger Lane Gyrotary
Link number: 249
Description: Design to improve access to shared paths with dropped kerbs and keeping parking clear.
Length: 0.44km **Cost:** £7,500

CRISP: BS\05\LCN\EAL.05
Link number: 48
CRIM Undertaken: 05-Aug-05
Final CRISP: 09-Jan-05
Cost: £7,000 **Length:** 8.51km