

# Greenwich

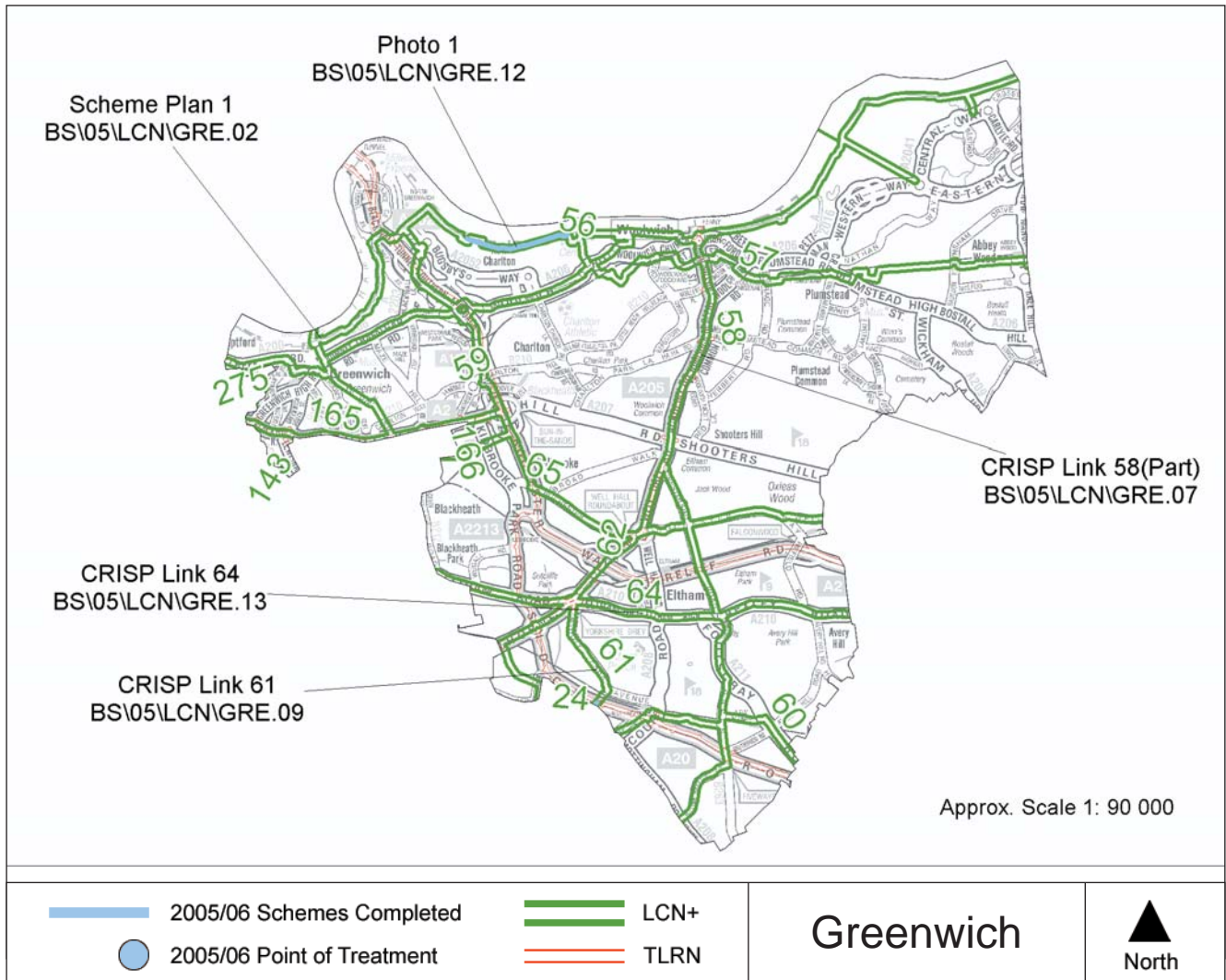


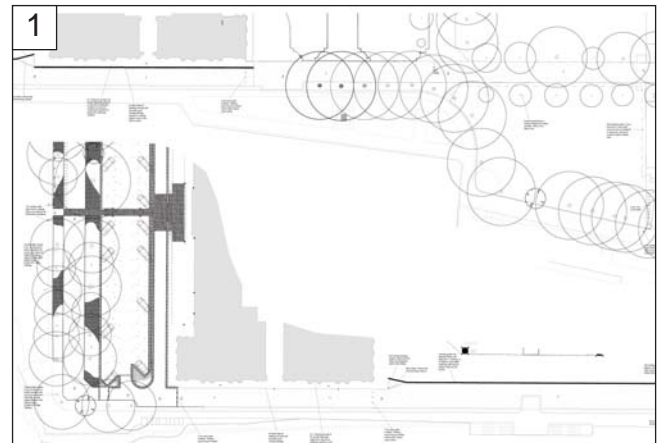
Borough Officer: **Donald Anyiam**



I am situated within the highways department/section at LB of Greenwich. We currently use a combination of in house staff and external consultants to meet our resource needs for progressing the LCN+ in our borough. We are continuing to progress the Thames Path (NCN Route 4). With successful completion of a scheme in 2005/6 to provide improved continuity around the Greenwich Yacht Club. The Thames Path is largely a traffic free route and will therefore provide a safe, comfortable environment for cycling. Staging resources at LB of Greenwich has been a limiting factor on delivery of

projects. Therefore the focus for 2005/6 has been to utilise consultants for progression of feasibility and design in preparation for scheme delivery in 2006/7. LB Greenwich has formed a good partnership with Sus-trans, the LCN+ office and the Royal Naval College to overcome initial barriers to the scheme. Close liaison between all parties has enabled a workable solution sensitive to its surroundings while improving access for all users. CRISP Studies have identified where local cycle users want routes developed and also have made best use of area based and regeneration schemes for safety improvements for cyclists.



**Scheme Plan: 1****Scheme Reference:** BS\05\LCN\GRE.02**Location:** Royal Naval College - East West link through university grounds - linked with Trafalgar Tavern pedestrianisation.**Link number:** 56**Description:** Design and continued liaison to provide a shared path through Greenwich Royal Naval College as an important part of the National Cycle Network.**Length:** 0.42km**Cost:** £110,000**Scheme Photo: 1****Scheme Reference:**

BS\05\LCN\GRE.12

**Location:** Greenwich Yacht Club to Thames Barrier**Link number:** 56**Description:** Conversion of shared path to segregated path**Length:** 1.33km**Cost:** £31,188**Scheme Reference:**

BS\05\LCN\GRE.04

**Location:** Cutty Sark Gardens (along riverside)**Link number:** 56**Description:** Feasibility, design and consultation for Scheme unable to be progressed due to By-Laws.**Cost:** £13,000**Scheme Reference:** BS\05\LCN\GRE.10**Location:** Creek Road/Copperas Street**Link number:** 65**Description:** Feasibility study to provide improved access to existing toucan crossing, as part of National Cycle Network.**Cost:** £5,000**Scheme Reference:** BS\05\LCN\GRE.03**Location:** Entire Link (with particular attention to Woolwich Area - include Woolwich Ferry Crossing)**Link number:** 56**Description:** Signing Scheme deferred**Cost:** £5,000**Scheme Reference:**

BS\05\LCN\GRE.11

**Location:** King Johns Walk approach to A20 crossing**Link number:** 61**Description:** Feasibility study to provide improved cycle crossing of footbridge across railway line.**Cost:** £4,286**Scheme Reference:**

BS\05\LCN\GRE.01

**Location:** King William Walk**Link number:** 63**Description:** Contribution towards a traffic model to improve access for all modes of transport to Greenwich Town Centre.**Cost:** £2,728**Scheme Reference:**

BS\05\LCN\GRE.08

**Location:** Circular Way/A205 South Circular Road**Link number:** 58**Description:** Scheme on TLRN, to progressed by TfL**Cost:** £143**CRISP:** BS\05\LCN\GRE.13**Link number:** 64**CRIM Undertaken:** 14-2-06**Final CRISP Report:****Length:** 6.95km**Cost:** £7,100**CRISP:** BS\05\LCN\GRE.09**Link number:** 61**CRIM Undertaken:** 14-2-06**Final CRISP Report:****Length:** 1.54km**Cost:** £5,000**CRISP:** BS\05\LCN\GRE.07**Link number:** 58 (part)**CRIM Undertaken:** 06-2-06**Final CRISP Report:** 12-6-06**Length:** 5.16km**Cost:** £5,000