

Hammersmith and Fulham



Borough Officer: **Simon Franklin**



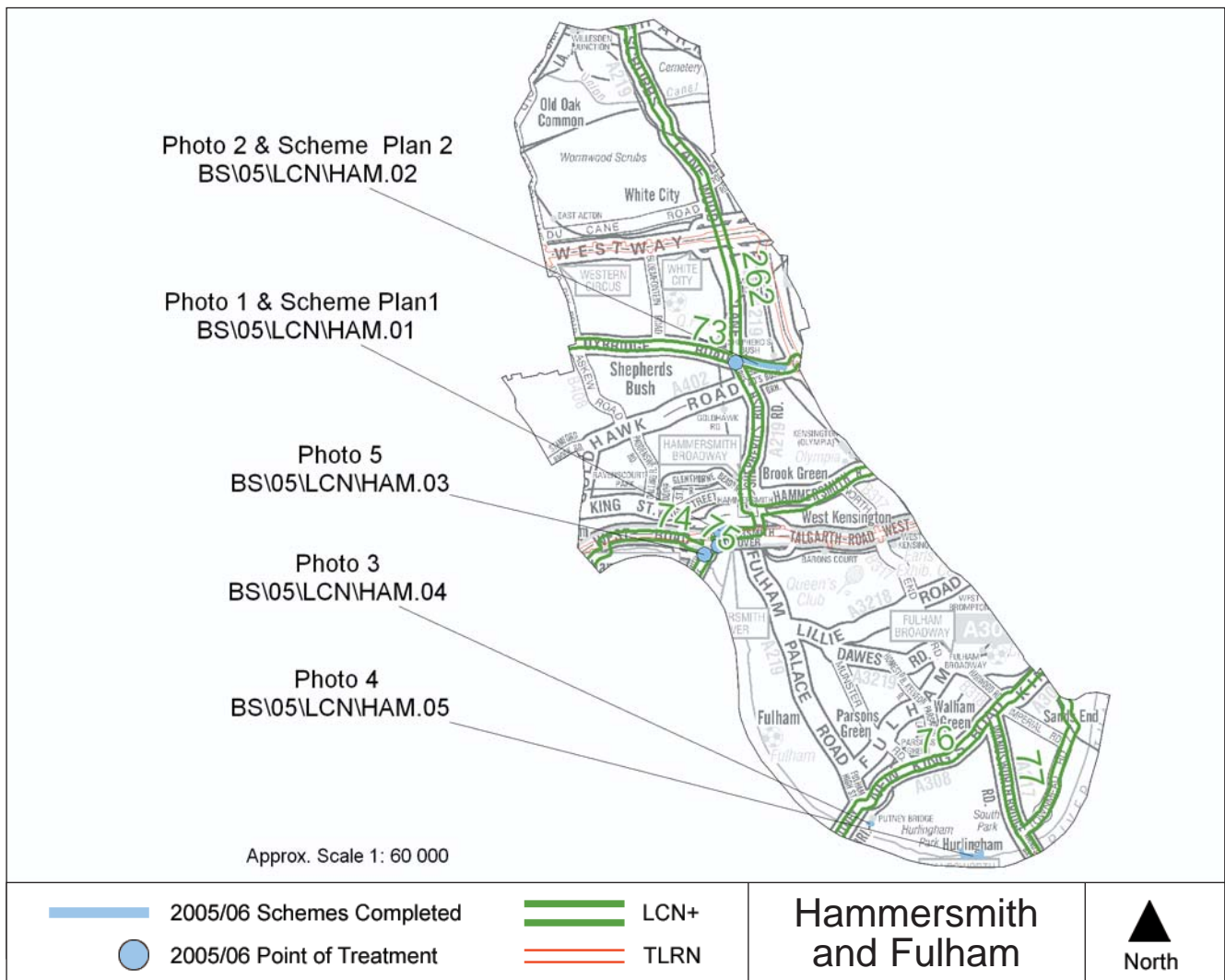
At LB Hammersmith and Fulham we have a small team dedicated to design and overseeing the implementation of LCN+ schemes.

I am Sector Leader in the North West Sector and Chris Bainbridge is chair of the London Borough Cycle Officers Group.

Areas that are unattractive to cyclists because of the high level of general traffic present a big challenge. In 2005/06 we approached hotspots such as Hammersmith Broadway and Shepherds Bush Green and began work trying to make them safer and more attractive for cyclists. This work is on a large scale and will take more than a single

year to complete, however we have made significant advances in the design and consultation of such schemes.

We have in the past carried out CRISP studies; though have more to do in the coming year. These will prove useful tools in planning the final years of the LCN+ project in LB Hammersmith and Fulham and will also help cement a relationship with HFCyclists, the local branch of the LCC. TfL's "Towards the year 2010: monitoring casualties" stated that pedal cycle casualties in LBHF were down by 19% on the 1994-98 average; this is despite the large increase in cycling taking place. We hope that this will continue as a trend and we can maintain both accident reduction and a growth in cyclist figures.



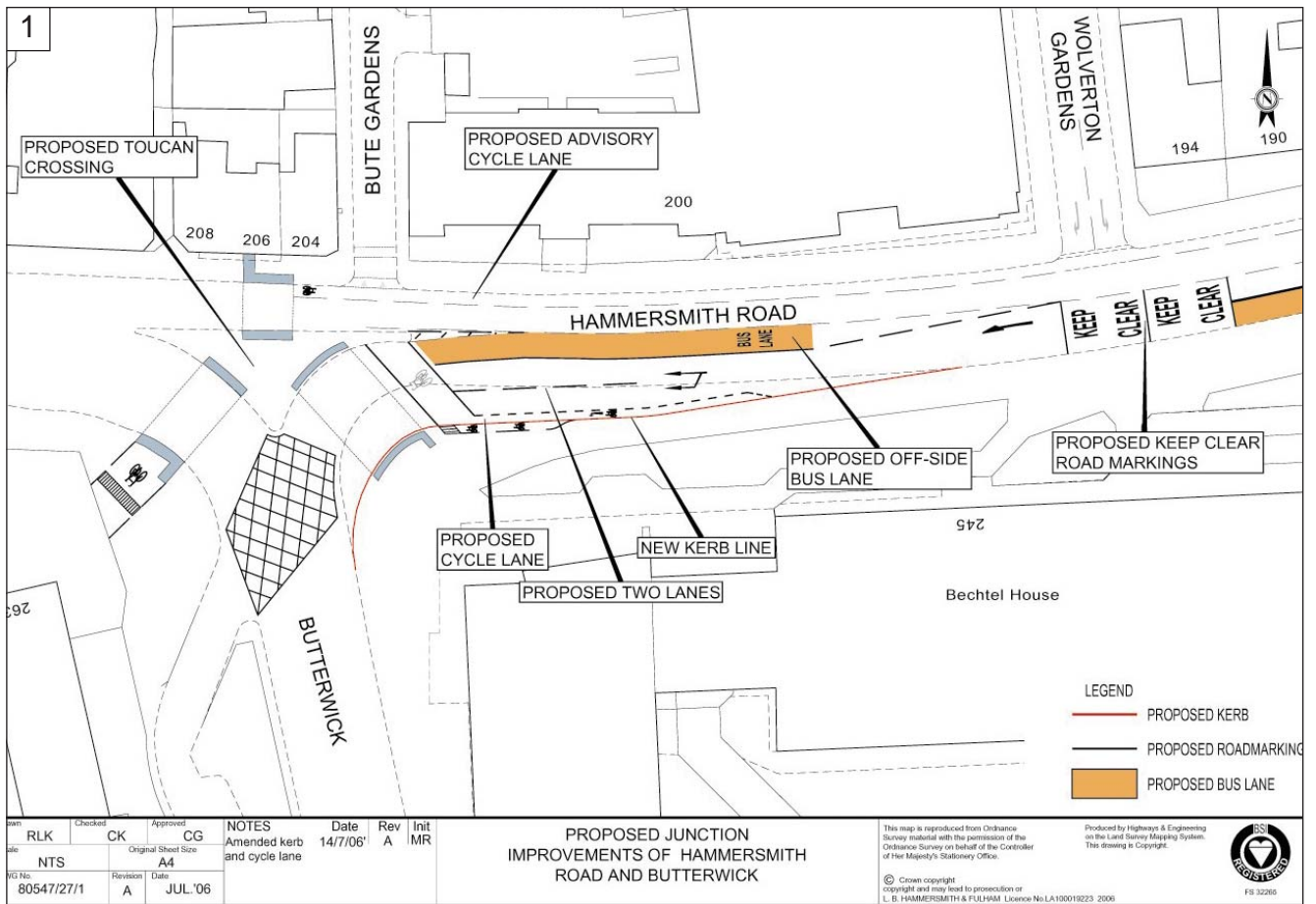


Photo 1 & Scheme Plan: 1
Scheme Reference: BS\05\LCN\HAM.01
Location: Hammersmith Broadway Gyratory
Link number: 74, 75
Description: Implementation complete for improvements to existing toucan crossing on Hammersmith Bridge Road. Design complete for toucan crossing at Hammersmith Road junction with Butterwick (implementation deferred to 2006/07).
Cost: £95,000



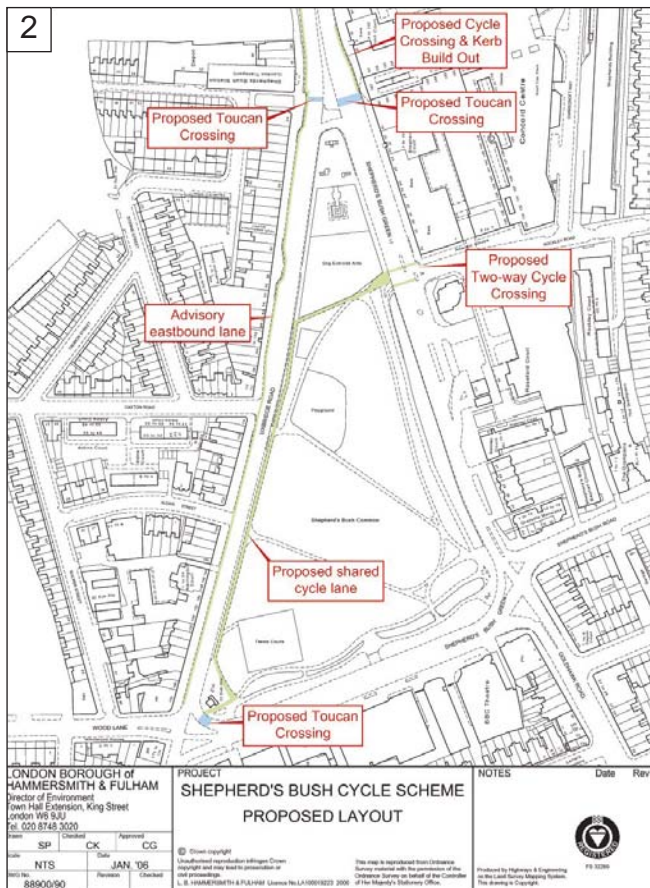


Photo 2 & Scheme Plan: 2
Scheme Reference: BS\05\LCN\HAM.02
Location: Shepherd's Bush Green
Link number: 73
Description: Implementation complete for minor improvements to existing staggered toucan crossing at Shepherd's Bush Green/Uxbridge Road junction, and provision of advisory cycle lane on north side of Uxbridge Road between Wood Lane and Holland Park Roundabout. Preliminary design completed for cycle track through the common and traffic signal amendments at Shepherd's Bush Green junction with Rockley Road (to be developed further in 2006/07).
Length: 0.41km **Cost:** £60,000

Scheme Photo: 3
Scheme Reference: BS\05\LCN\HAM.04
Location: Kings Road to Putney Bridge
Link number: 76
Description: Implementation complete for improvements to existing cycle gap, emergency access and cycle parking layout through road closure underneath the railway arch at Putney Bridge Station.
Length: 0.03km
Cost: £55,000



Scheme Photo: 4**Scheme Reference:**

BS\05\LCN\HAM.05

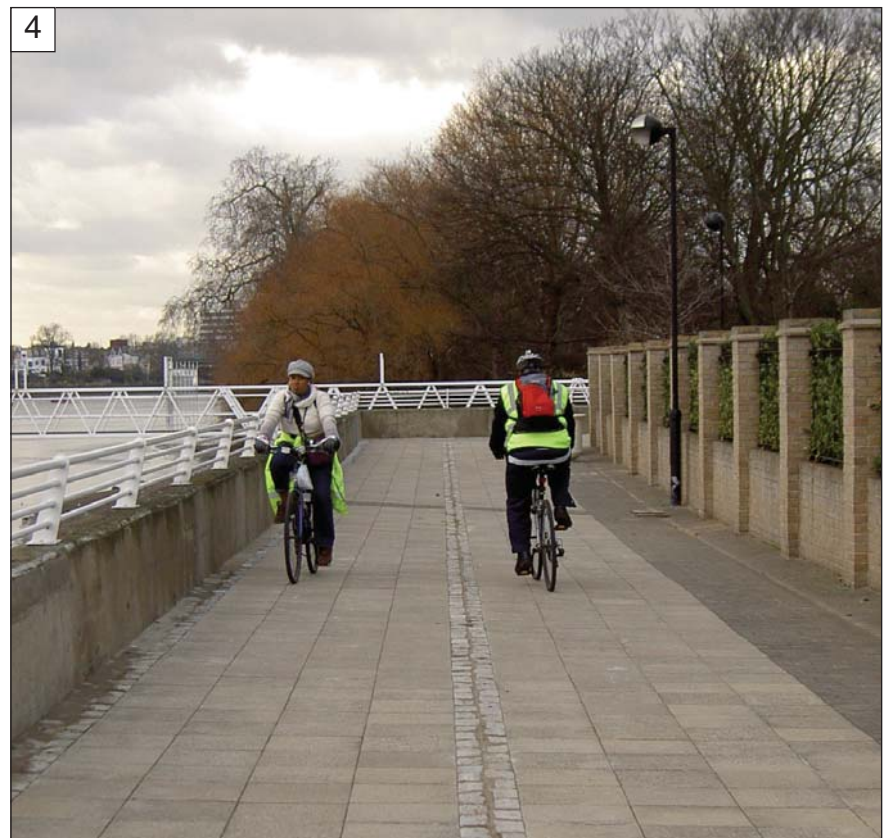
Location: Putney Bridge to Sands End (Spur between Wandsworth Bridge and Hurlingham Park via Thames Riverside Cycle Route adjacent to Carnwath Road between Broomhouse Lane and Peterborough Road)

Link number: Spur to Link 76

Description: Implementation complete for segregated /shared use facility. The works form the first part of proposals to provide a traffic free spur between Wandsworth Bridge and Hurlingham Park.

Length: 0.26km

Cost: £50,000



Scheme Reference: BS\05\LCN\HAM.07

Location: Asset Management Initiative (all LCN+ Routes)

Link number: ALL

Description: Repair of road surface defects on LCN+ Links to improve the quality of ride for cyclists.

Cost: £28,000

Scheme Reference: BS\05\LCN\HAM.08

Location: Sector Leader Fees

Link number: N/A

Description: Fees for the management and coordination of the North West Sector.

Cost: £15,000

Scheme Photo: 5**Scheme Reference:**

BS\05\LCN\HAM.03

Location: Hammersmith Bridge Road

Link number: 75

Description: Implementation complete for minor improvements to cycle gap to improve access through Worlidge Street road closure, and minor improvements at Rutland Grove junction including dropped kerbing, surface upgrades and road markings.

Length: 0.01km

Cost: £15,000

