

Lambeth

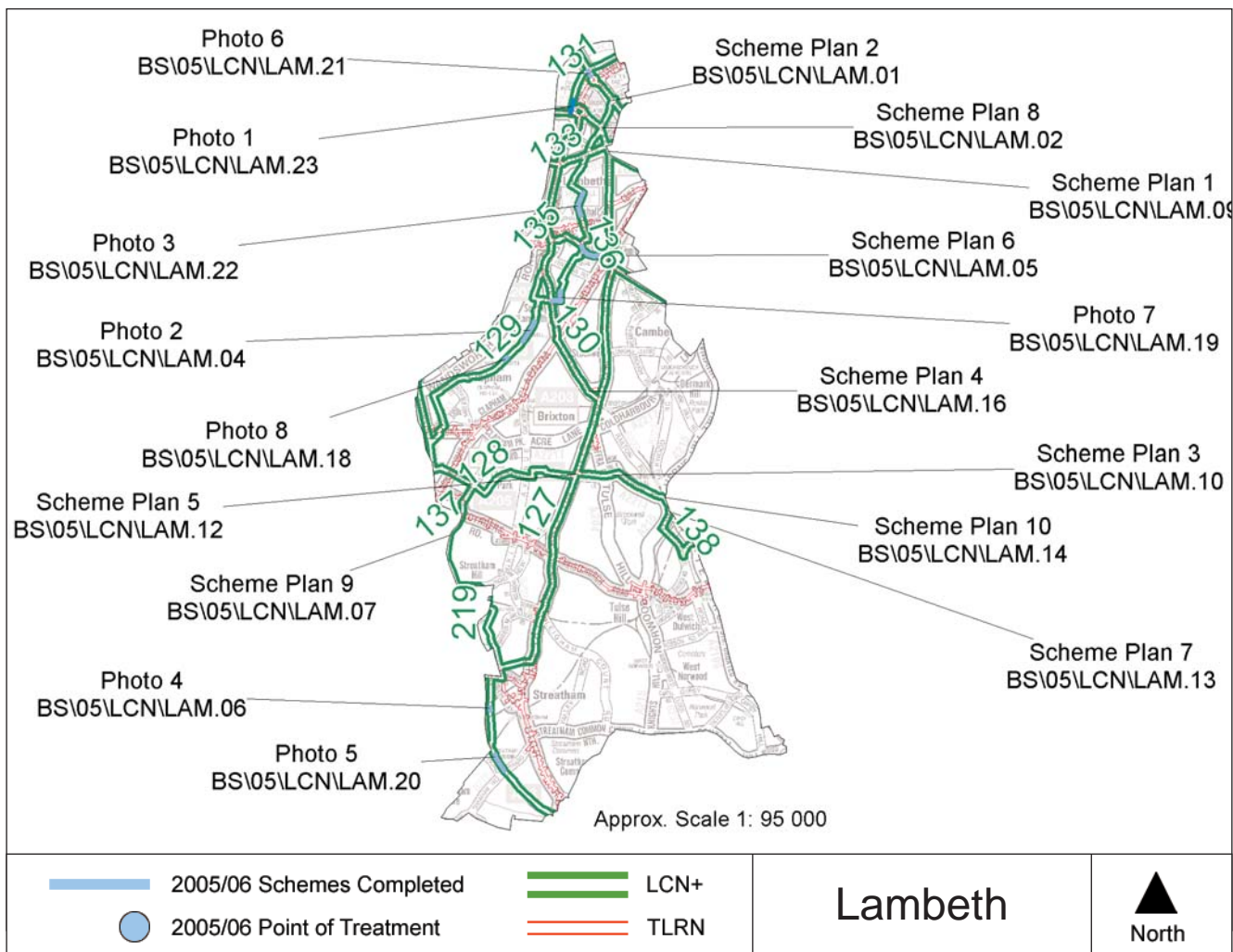


Borough Officer: **Richard Ambler**



Cycling is now well established at the heart of Transport and Highways both in policy and in scheme implementation. My role of Cycle Projects Manager is within the Transport Planning and Strategy Team. I also employ external consultants to work on designs and to undertake consultation on some of the larger projects. I have recently appointed an engineer within Highways to manage the Asset Management Programme. A recent cycle count on a cycle scheme in Lambeth showed a 69% increase in use one year after implementation compared to counts taken before. The main issue in 2005/06 was capacity to deliver. With an ever-increasing programme we have

employed a project engineer within Highways to manage the development and implementation of projects, and negotiated agreements with Highways who are now very enthusiastic about delivering cycle schemes. There was a 21% reduction in cycle casualties in Lambeth in 2005, against an increase of approximately 69% in the number of people cycling. Lambeth has an excellent working relationship with the local LCC group based on trust and agreement of basic principles. The new Deputy Executive for Transport and Parking is an LCC member. His support helped to overcome tricky consultation issues on the Vauxhall Street scheme. The CRISP process has provided a more strategic approach to the implementation of LCN+ schemes.





Scheme Photo: 1
Scheme Reference: BS\05\LCN\LAM.23
Location: Belvedere Road
Link number: 131
Description: Financial contribution to public realm improvement scheme adjacent to London Eye, providing traffic calming benefits and improving priority for cyclists.
Length: 0.67km
Cost: £91,000

Scheme Photo: 2
Scheme Reference: BS\05\LCN\LAM.04
Location: Larkhall Lane (between Priory Grove & Lansdowne Way)
Link number: 129
Description: Implementation complete for traffic calming on Larkhall Lane and junction improvements at Larkhall Lane/Lansdowne Way. Design completed for improvements to cycle point no entry at Priory Grove.
Length: 0.32km **Cost:** £64,512





Scheme Photo: 3

Scheme Reference: BS\05\LCN\LAM.22

Location: Vauxhall Street North

Link number: 128

Description: Implementation complete for Phases 1 & 2, including junction layout alterations and provision of raised table (phase 3 deferred to 2006/07 pending preparation of TRO's for contra-flow cycling and point no-entry in one-way street).

Length: 0.34km **Cost:** £62,500

Scheme Photo: 4

Scheme Reference:

BS\05\LCN\LAM.06

Location: Riggindale Road/A216 Mitcham Lane/Conyers Road junction

Link number: 127

Description: Implementation complete for alterations to existing point no-entry at junction.

Length: 0.02km

Cost: £50,000





Scheme Plan: 1
Scheme Reference: BS\05\LCN\LAM.09
Location: Kennington Road (between Lambeth Road and A3204 Kennington Lane)
Link number: 127
Description: Feasibility and design completed (implementation deferred to 2006/07).
Length: 0.78km
Cost: £49,445

Scheme Photo: 5
Scheme Reference: BS\05\LCN\LAM.20
Location: Estreham Road
Link number: 128
Description: Implementation complete for traffic calming and changes to traffic priority. Improving cycle access and reducing motorists' speeds.
Length: 0.26km
Cost: £47,473



Scheme Plan: 3

Scheme Reference:

BS\05\LCN\LAM.10

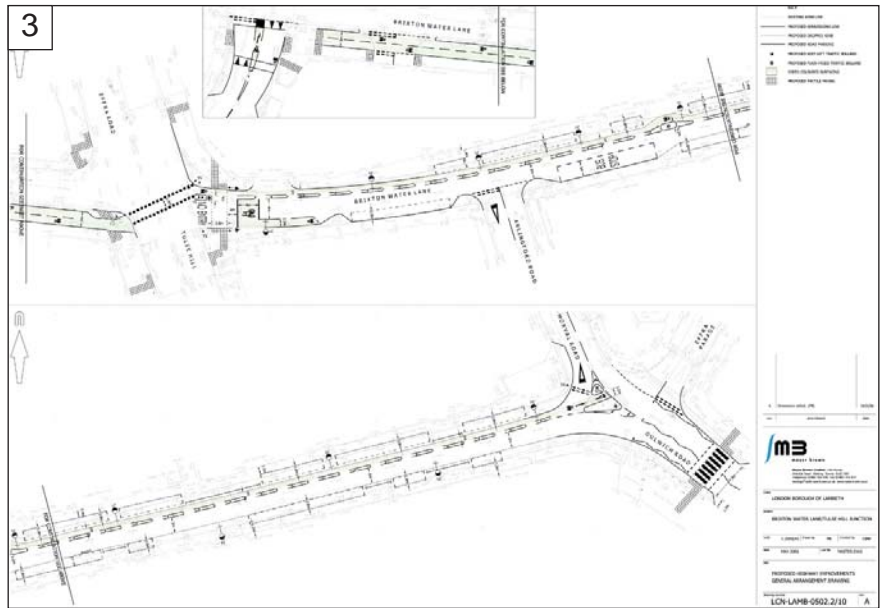
Location: Brixton Water Lane

Link number: 128

Description: Feasibility and design completed for two-way segregated cycle track (consultation and implementation deferred to 2006/07).

Length: 0.18km

Cost: £26,500



Scheme Plan: 2

Scheme Reference:

BS\05\LCN\LAM.01

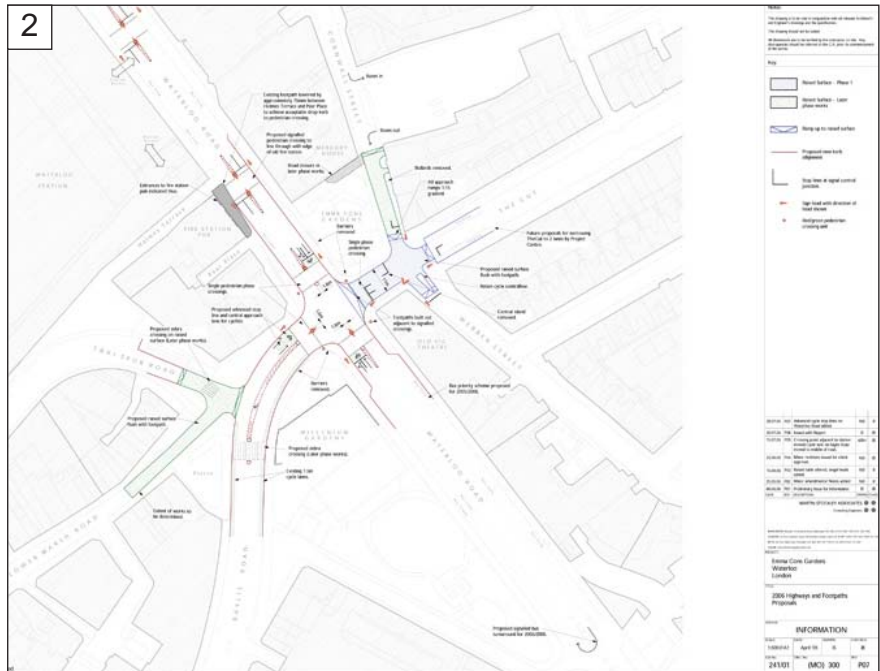
Location: Baylis Road/Waterloo Road/The Cut/Emma Cons junction

Link number: 129, 132

Description: Financial contribution to public realm improvement scheme. Minor preparatory works undertaken in 2005/06. Implementation deferred to 2006/07.

Length: 0.05km

Cost: £43,000



Scheme Photo: 6

Scheme Reference:

BS\05\LCN\LAM.21

Location: Waterloo Bridge Up Ramp

Link number: 128

Description: Implementation complete for provision of contra-flow cycle track in one-way street.

Length: 0.08km

Cost: £23,650



Scheme Photo: 7

Scheme Reference:

BS\05\LCN\LAM.19

Location: Alderbert Terrace/St Stephens junction

Link number: 128

Description: Implementation complete for kerb realignment and raised table to reduce motorists conflict with both pedestrians and cyclists.

Cost: £19,440



Scheme Plan: 4

Scheme Reference:

BS\05\LCN\LAM.16

Location: Stockwell Avenue

Link number: 128

Description: Design completed for provision of point no-entry (implementation deferred to 2006/07).

Length: 0.02km

Cost: £18,500



Scheme Photo: 8

Scheme Reference:

BS\05\LCN\LAM.18

Location: Union Road/Larkhall Lane junction

Link number: 128

Description: Implementation complete for 4 ASL's including lead in lanes following stage 4 safety audit recommendations.

Length: 0.06km

Cost: £16,873



Scheme Plan: 5

Scheme Reference: BS\05\LCN\LAM.12

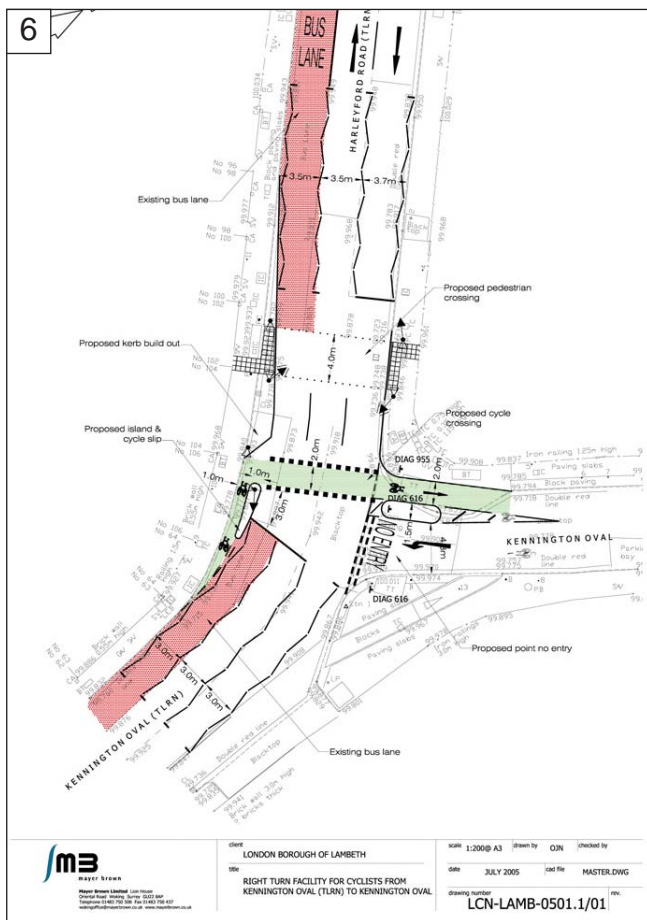
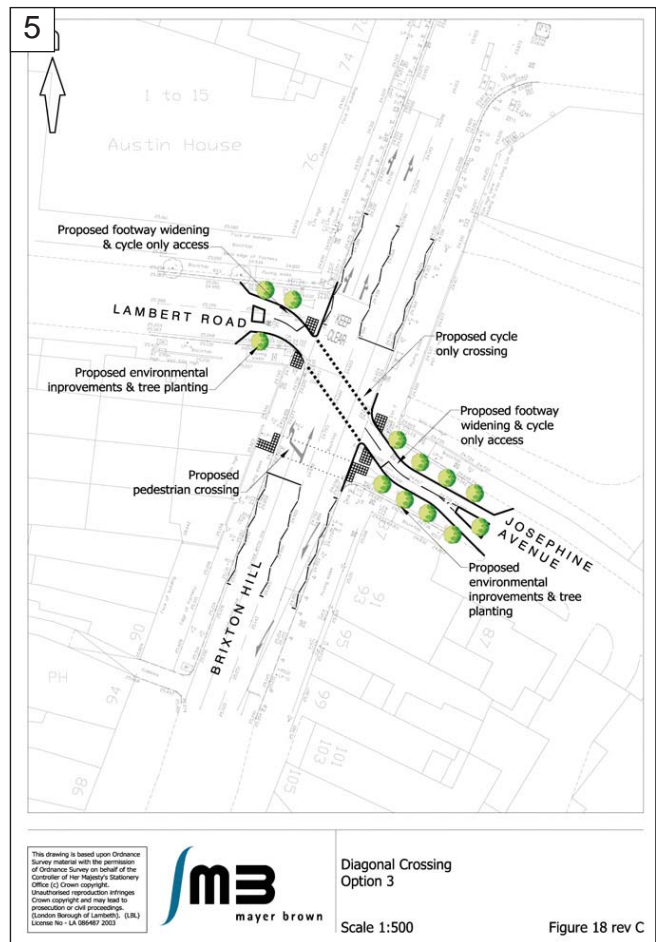
Location: Brixton Water Lane/Lambert Road/A23 Brixton Hill junction

Link number: 127, 128

Description: Feasibility and preliminary design completed for road closures and signalised cycle crossing (design, consultation and implementation deferred to 2006/07).

Length: 0.10km

Cost: £15,000



Scheme Plan: 6

Scheme Reference: BS\05\LCN\LAM.05

Location: Kennington Oval North-side

Link number: 129, 136

Description: Feasibility and outline design completed (design and implementation deferred to 2006/07).

Cost: £12,000

Scheme Plan: 7

Scheme Reference: BS\05\LCN\LAM.13

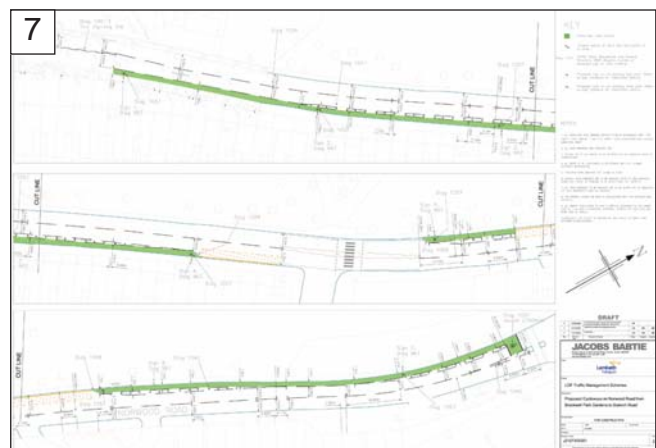
Location: A215 Norwood Road (on approaches to Croxted Road junction)

Link number: 138

Description: Design completed for provision of cycle lanes and toucan crossing (implementation deferred to 2006/07).

Length: 0.07km

Cost: £10,000



Scheme Plan: 8

Scheme Reference:

BS\05\LCN\LAM.02

Location: Baylis

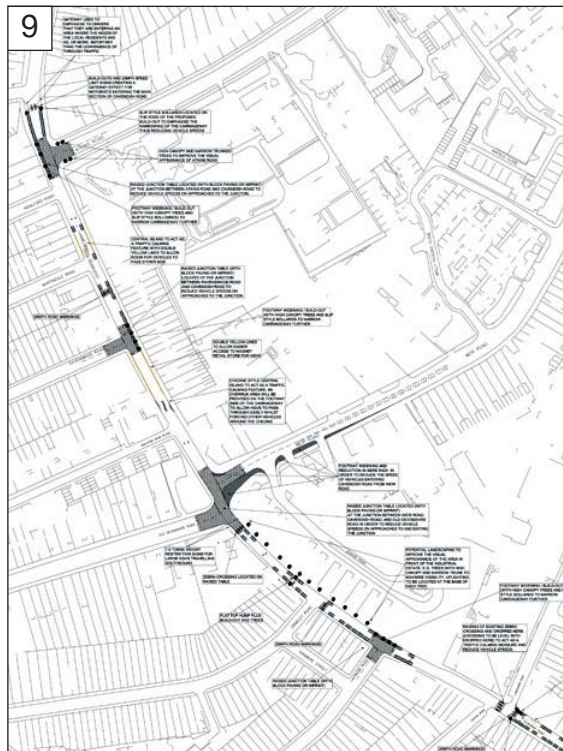
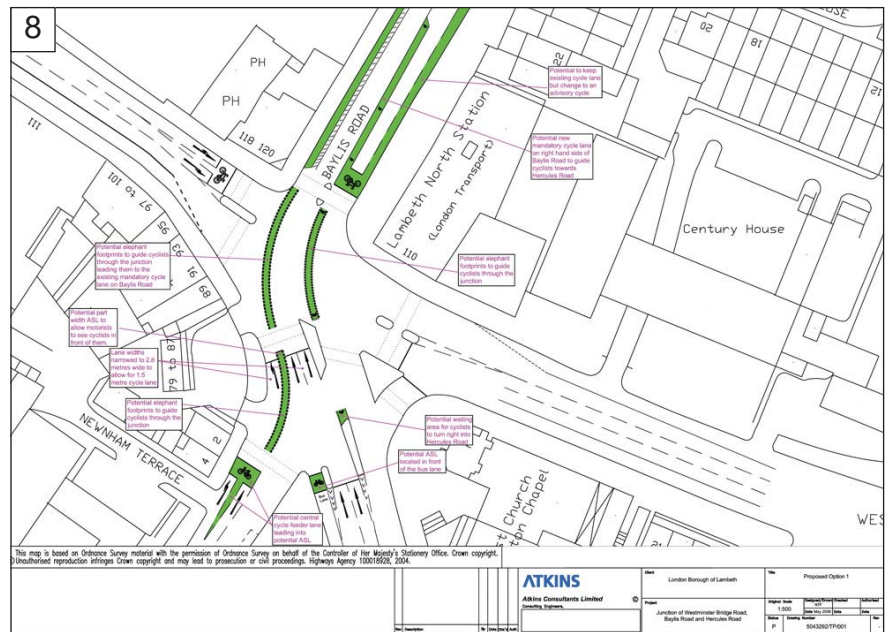
Road/Westminster Bridge Road/Hercules Road junction

Link number: 129, 139

Description: Feasibility study and preliminary design completed for traffic calming and change of priority at junction (further design, consultation and implementation deferred to 2006/07).

Length: 0.12km

Cost: £9,804



Scheme Plan: 9

Scheme Reference: BS\05\LCN\LAM.07

Location: Cavendish Road

Link number: 137

Description: Feasibility study and preliminary design of traffic calming measures on long stretch of Cavendish Road.

Length: 1.09km

Cost: £9,545

Scheme Plan: 10

Scheme Reference: BS\05\LCN\LAM.14

Location: Herne Hill Station Area (in the vicinity of A2214 Dulwich Road/A215 Norwood Road junction)

Link number: 128

Description: Financial contribution to ongoing area wide study.

Length: 0.06km

Cost: £3,000

