

Waltham Forest

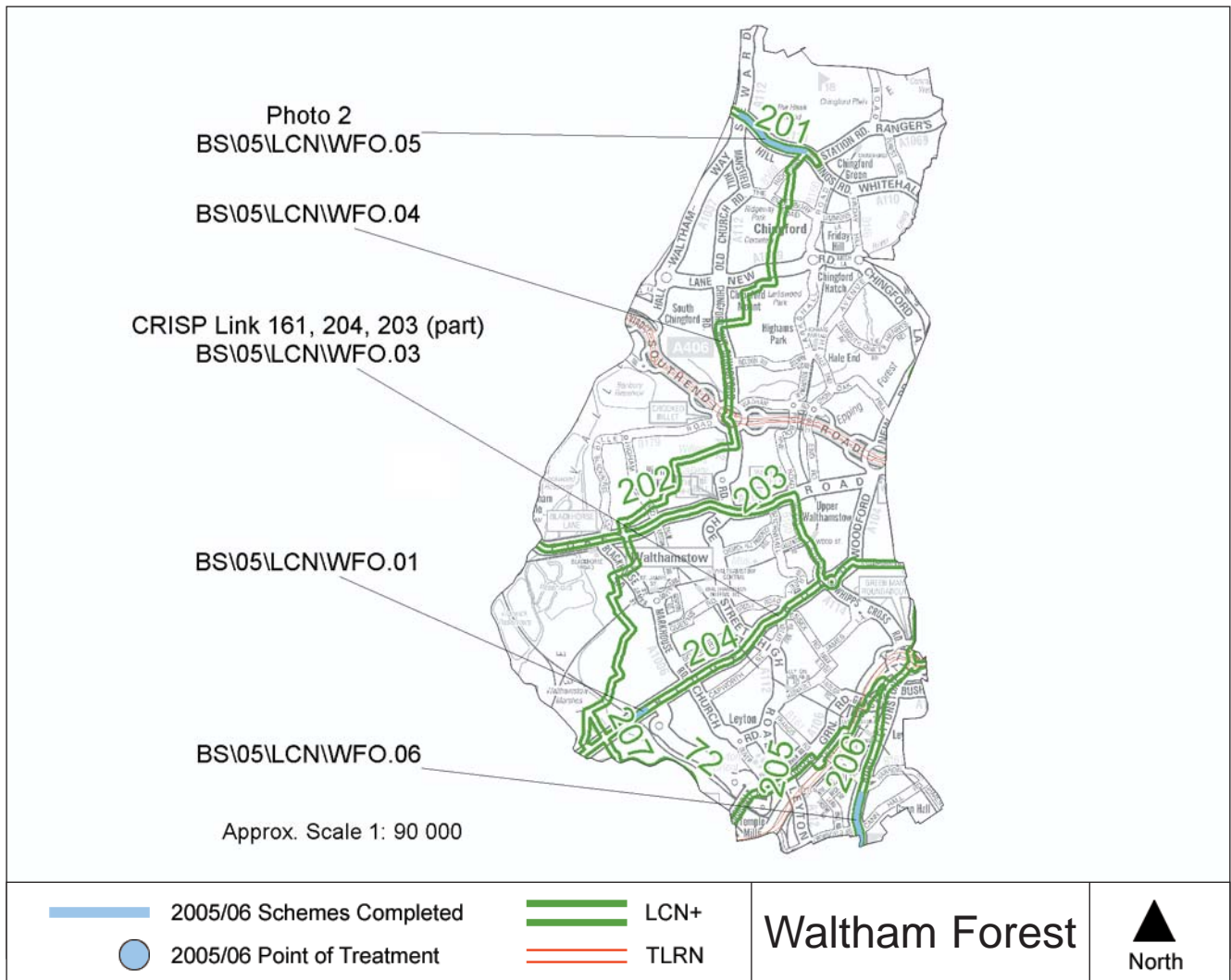


Borough Officer: **Gina Harkell**



As the Cycling Officer, I am responsible for the delivery of LCN+ schemes in the borough of Waltham Forest. Everything, from the design of a scheme through to its implementation, is done in-house. The main challenge in the past year was work pressure on engineering staff. However we have now overcome this problem by bringing in a new member of staff dedicated to working on cycle schemes. Cycling has increased by 83% between 1998 and 2006, according to recent screenline counts at 10 sites in the borough, whilst the number of accidents has halved between 1996 and 2004. Our

partners include most notably the local LCC group, the Lea Valley Park Authority and Sustrans as well as local borough cycling officers in adjacent boroughs. We are working particularly closely with all of these in drawing up plans for the forthcoming Olympics. The CRISP process has concentrated our minds on areas where there were already cycling facilities and we have found ways of improving them as a result. This would probably not have happened otherwise. Consultation with stakeholders has enabled us to identify problem locations and work towards improving them.



Scheme Photo: 1**Scheme Reference:**

BS\05\LCN\WFO.06

Location: High Road,
Leytonstone (Crownfield
Road to Selby Road)**Link number:** 206**Description:** Advisory cycle
lanes and footway parking
scheme (continuing from
04/05)**Cost:** £80,307**Scheme Photo: 2****Scheme Reference:**

BS\05\LCN\WFO.05

Location: Kings Head Hill**Link number:** 201**Description:** Design and
implementation of advisory
cycle lanes and ASLs.**Length:** 0.80km**Cost:** £49,733**Scheme Reference:**

BS\05\LCN\WFO.04

Location: Chingford Road,
north of Billet roundabout -
Higham Station Avenue to
Sinclair Road**Link number:** 202**Description:** Coloured
surfacing**Length:** 0.44km**Cost:** £9,831**Scheme Reference:** BS\05\LCN\WFO.01**Location:** Lea Bridge Road between Riggs
Approach and Lammas Road**Link number:** 204**Description:** Implementation of four raised
entry treatments and transition to adjacent
cycle track.**Length:** 0.17km **Cost:** £49,817**CRISP:** BS\05\LCN\WFO.03**Link number:** 161, 204, 203 (part)**CRIM Undertaken:** 16-Jan-06**Final CRISP Report:** 18-Jul-06
Includes Link 161 (LB Redbridge).**Length:** 5.47km**Cost:** £10,137